

Freya.art

PANSY TUTORIAL



FREYA KOTCHAKORN

HELLO!

Thank you for downloading
this free tutorial.

In this tutorial, we are going to use premium brushes from
Effortless Flower Brush Set to draw a Pansy flower.

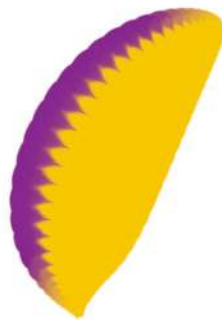


FREYA KOTCHAKORN

Freya.art

PANSY TUTORIAL

To recreate this flower, we are going to use two brushes from the Effortless Brush Set. Namely, Petal 20 and Leaf 11, Make sure that your Dynamic Scaling is turned on when you're using this brush set, you can find this under Actions > Preferences.



Petal 20

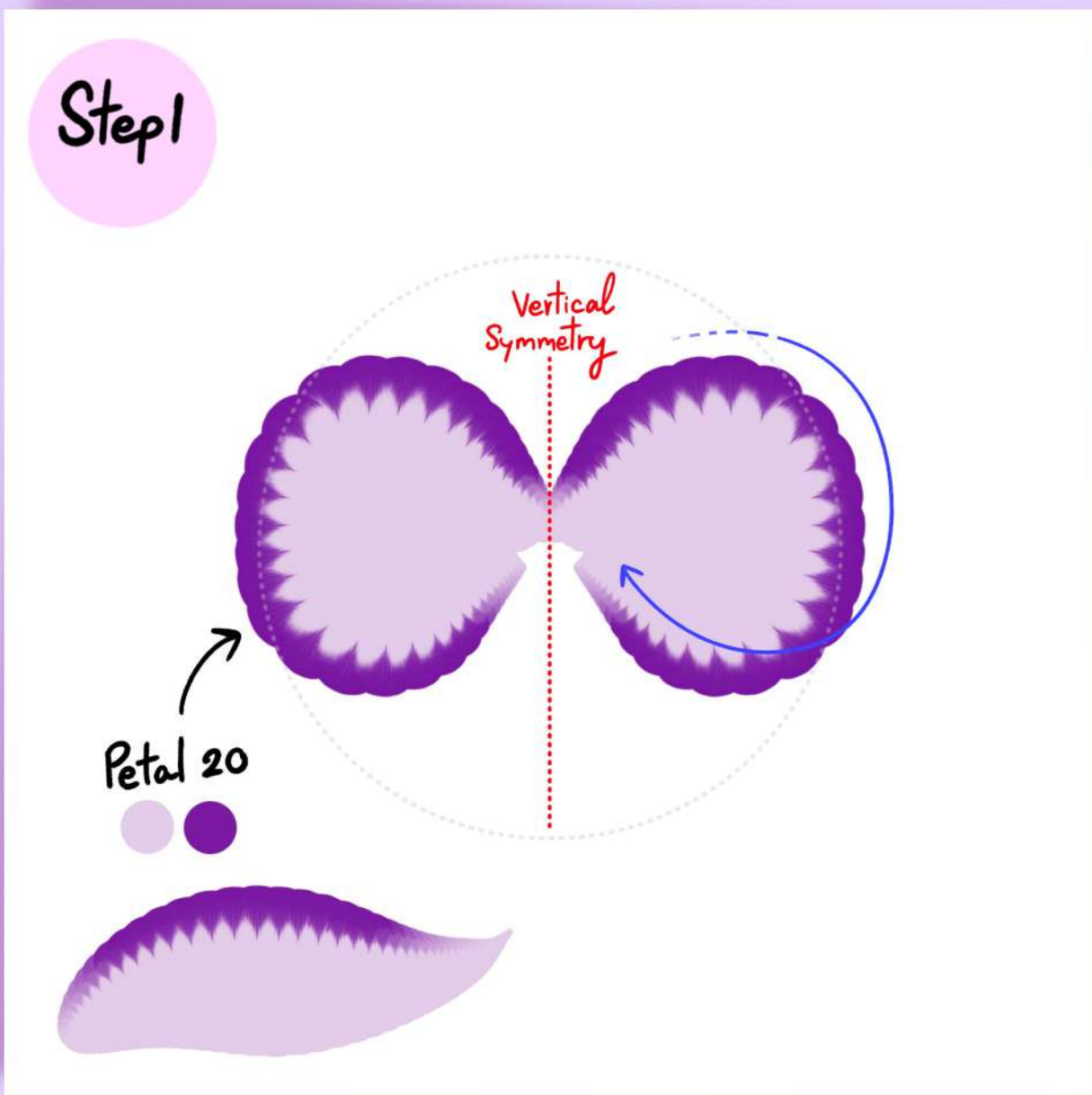


Leaf 11

Freya.art

PANSY TUTORIAL

Let's start with a 3000 x 3000-pixel canvas at 300 DPI. Then go to Actions > Enable Drawing Guide > Edit Drawing Guide > Choose Symmetry > Options > Vertical. Then set the colors and use Petal No. 20 and draw in a clockwise motion.



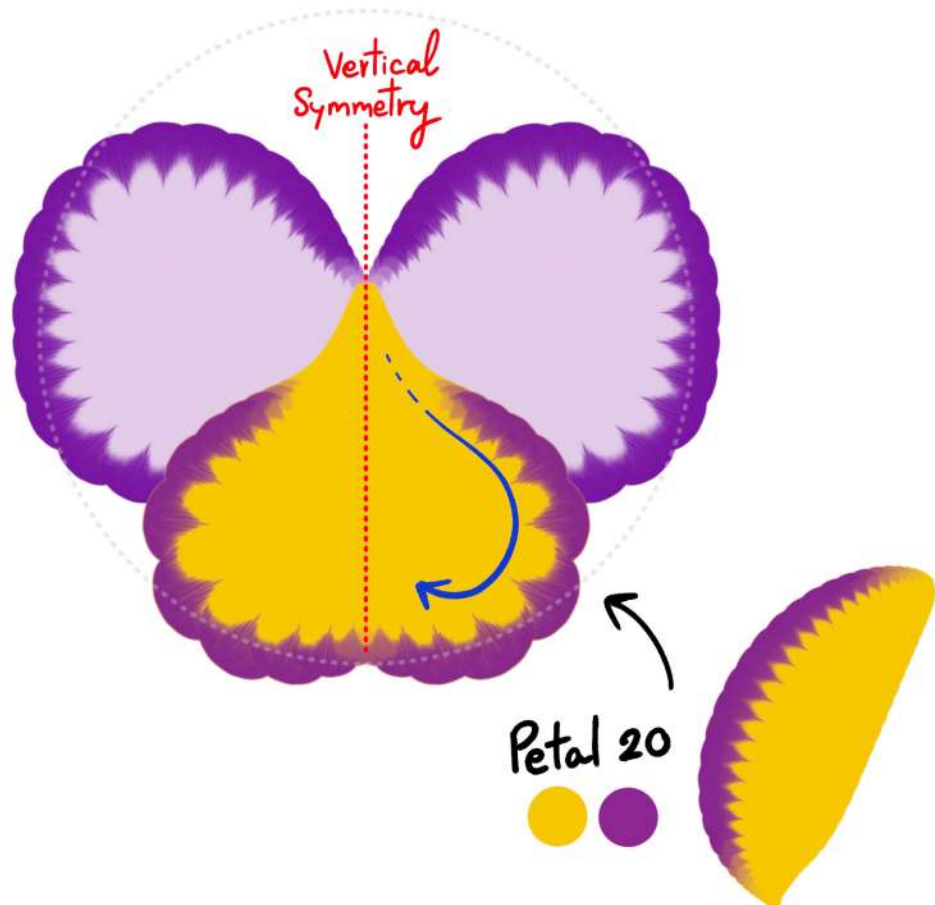
FREYA KOTCHAKORN

Freya.art

PANSY TUTORIAL

Still using the same brush and vertical symmetry, change the primary color to yellow and draw in a half circle curving inward.

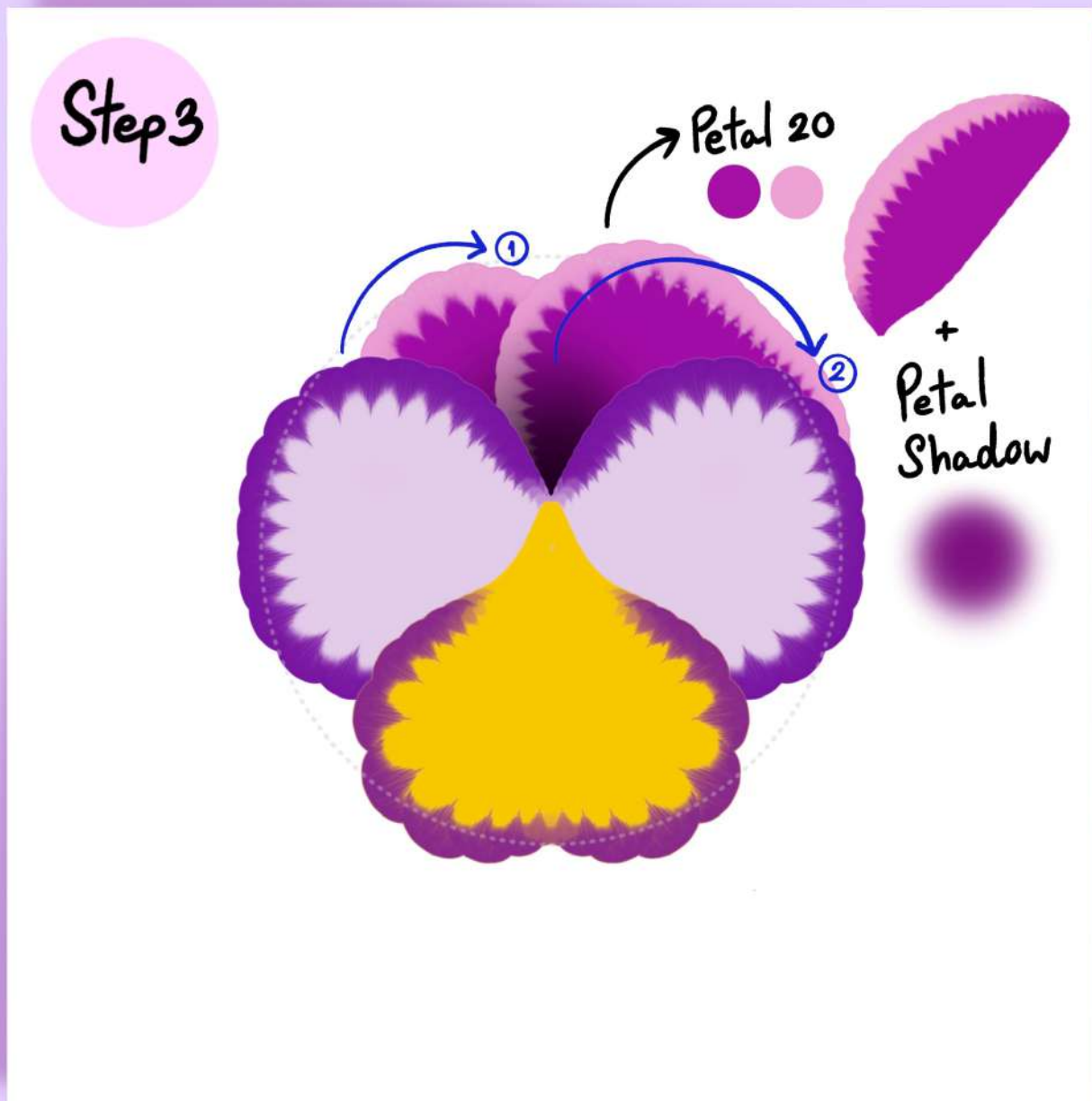
Step2



Freya.art

PANSY TUTORIAL

In a new layer underneath the first layer, draw more petals with a different color duo. And add some petal shadow around the area where the first layer overlaps or "touches" the bottom petals. This will add the illusion of depth to your drawing.



Freya.art

PANSY TUTORIAL

Add petal shadows in a dark purple color and petal light in a yellow color to the leaves to create the "folds" on the inner part of the petals. You can use vertical symmetry for this so it comes out more even.



Freya.art

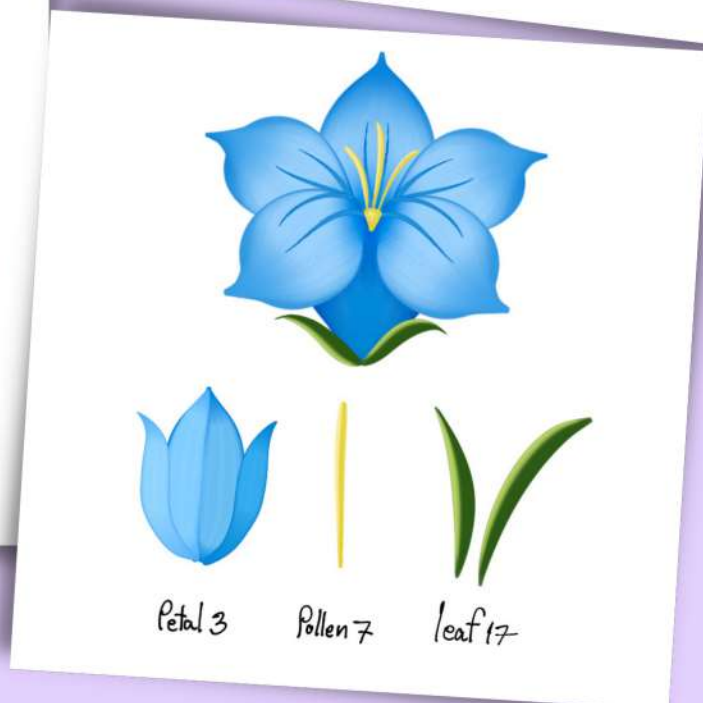
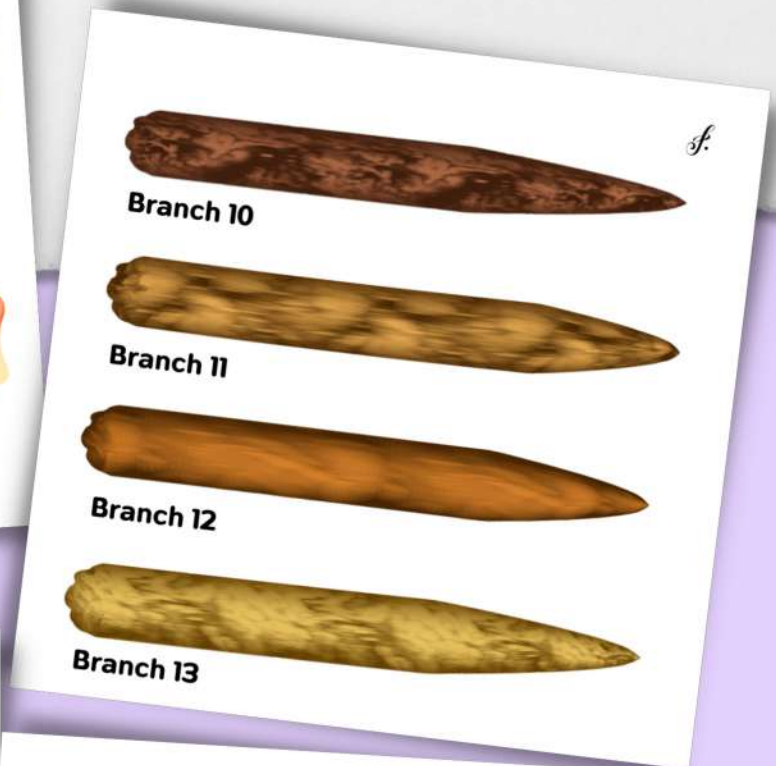
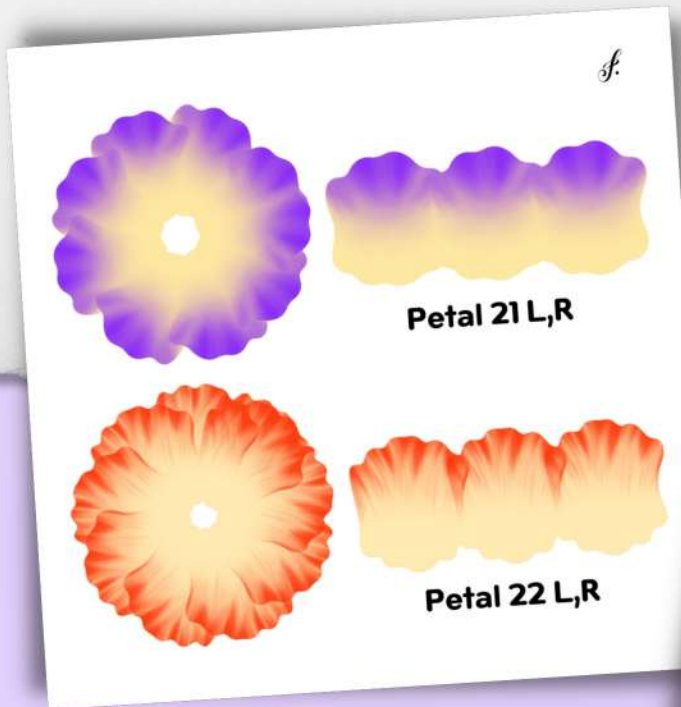
PANSY TUTORIAL

And finally for the leaves, add another layer at the very bottom of all of the layers, then use Leaf 11 in dark and light green color.



I hope you enjoyed this FREE Tutorial!

Please explore the many ways you can effortlessly create botanical illustrations with this set! The combinations are endless!



FREYA'S EFFORTLESS FLOWER BRUSH SET

PROCREATE.COURSES



FREYA KOTCHAKORN