

Freya.art

DAISY TUTORIAL



FREYA KOTCHAKORN

HELLO!

Thank you for downloading
this free tutorial.



In this tutorial, we are going to use premium brushes from the
Effortless Flower Brush Set to draw a daisy flower.

Freya.art

DAISY TUTORIAL

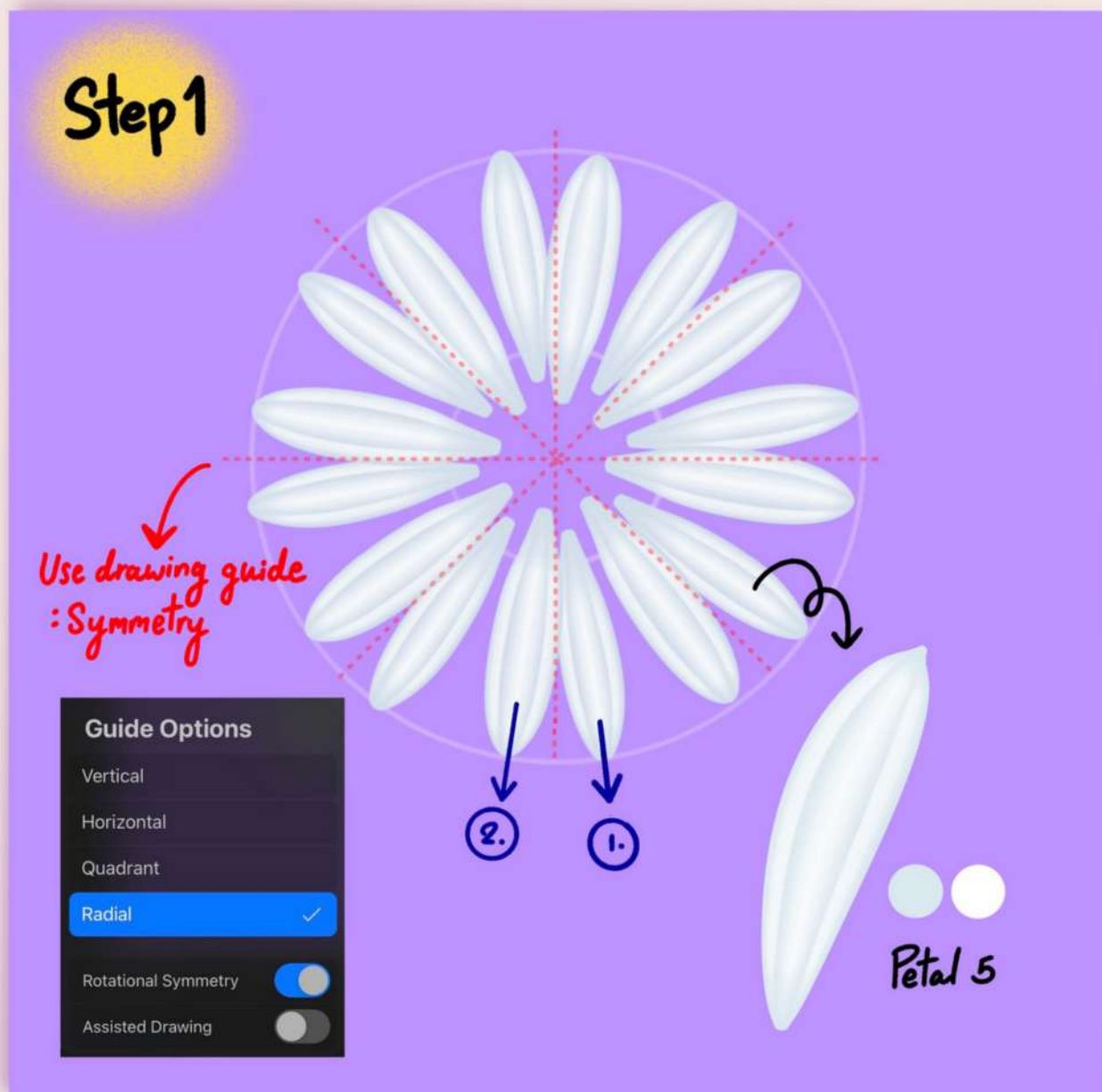
To recreate this flower, we are going to use five brushes from the Effortless Brush Set. Namely Leaf No. 10, Petal No. 5, Pollen No. 4 and 8. Make sure that your Dynamic Scaling is turned on when you're using this brush set, you can find this under Actions > Preferences.



Freya.art

DAISY TUTORIAL

Create a 3000 x 3000 pixel-canvas at 300 DPI. Create a layer. Then go to Actions > Canvas > and turn on Drawing Guide. Tap on Edit Drawing Guide > Tap on Symmetry > Options> and choose Radial and Rotational Symmetry. Tap Done.

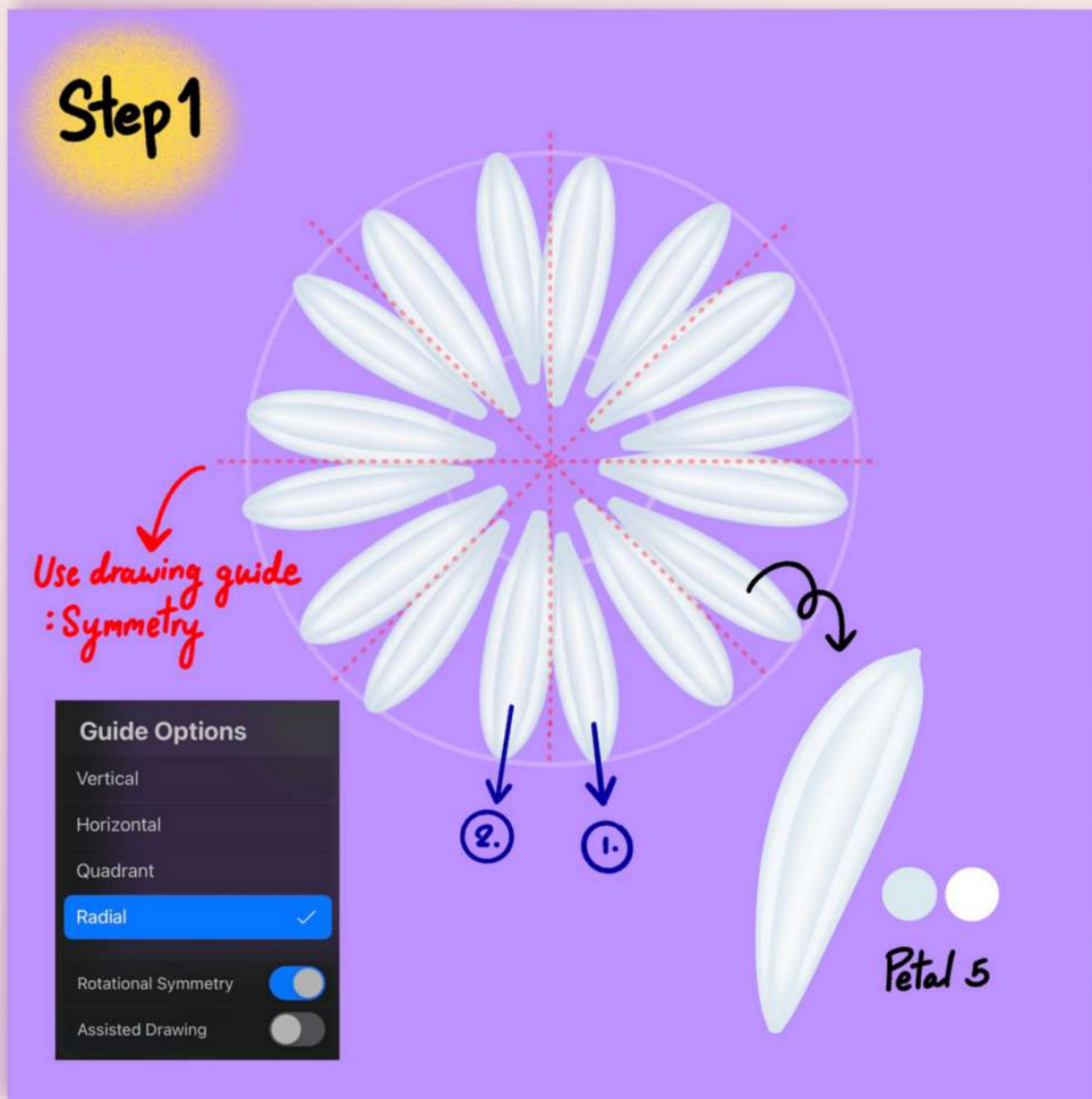


FREYA KOTCHAKORN

Freya.art

DAISY TUTORIAL

Go back to your layer and turn on Drawing Assist. Choose the color duo for the petals. After setting the primary and secondary colors for these dual brushes, remember to tap the primary color again, so that Procreate uses that as the active color.



FREYA KOTCHAKORN

Freya.art

DAISY TUTORIAL

Choose Petal No. 5 brush, then start painting the petals towards the center, tapering off at the end. One stroke and you'll have 8 petals. Draw another set so that you have 16 petals for this layer.

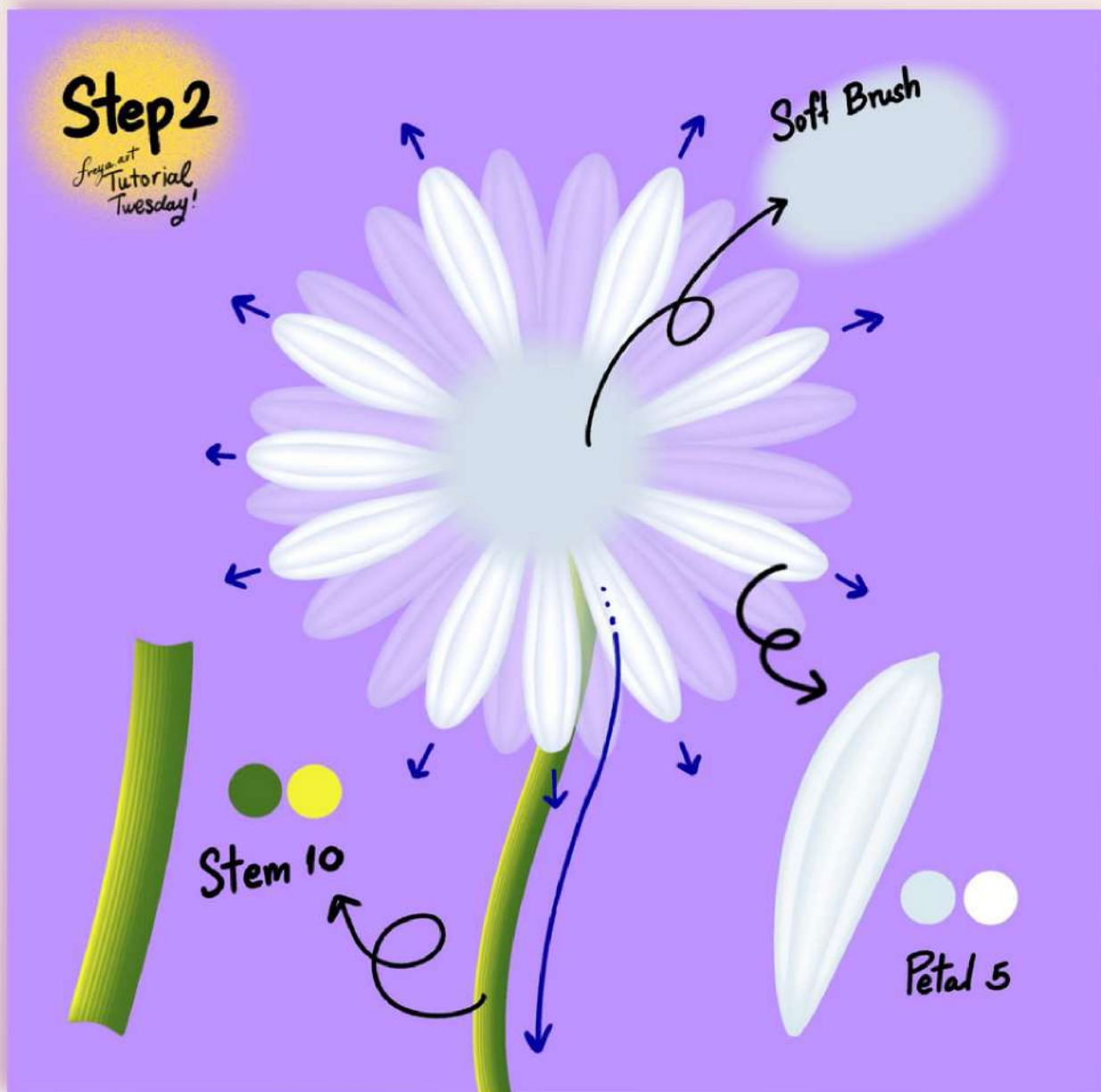


FREYA KOTCHAKORN

Freya.art

DAISY TUTORIAL

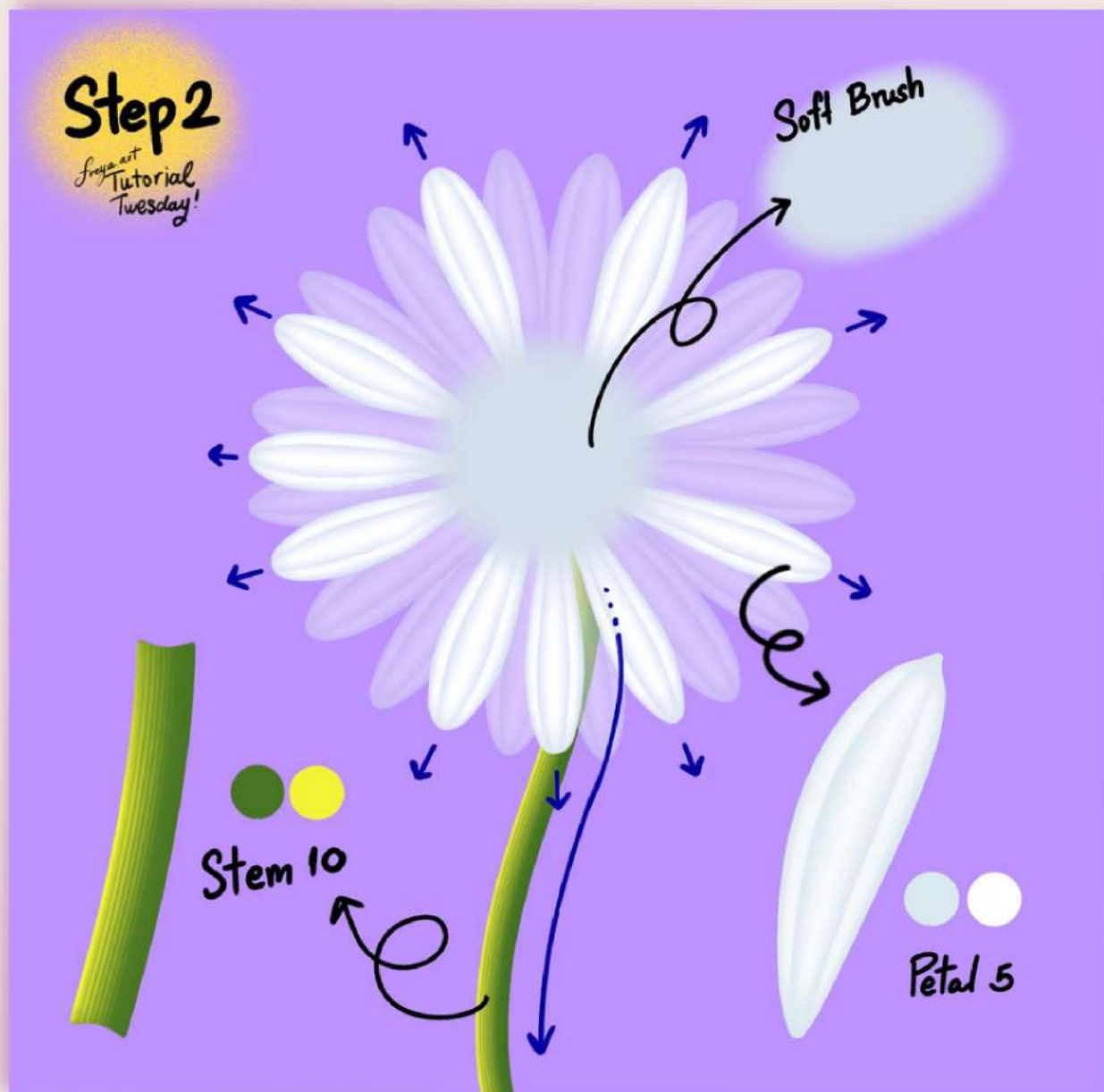
Add another layer but this time don't turn on the drawing assist. Use the green color duo and draw the stem using the Stem No. 10 brush.



Freya.art

DAISY TUTORIAL

Then add another layer. Set the color duo back to the petal color again, and this time draw the petals without Drawing Assist. This will help make it look more natural. This layer should be on top of the stem, so the top of the stem is covered.

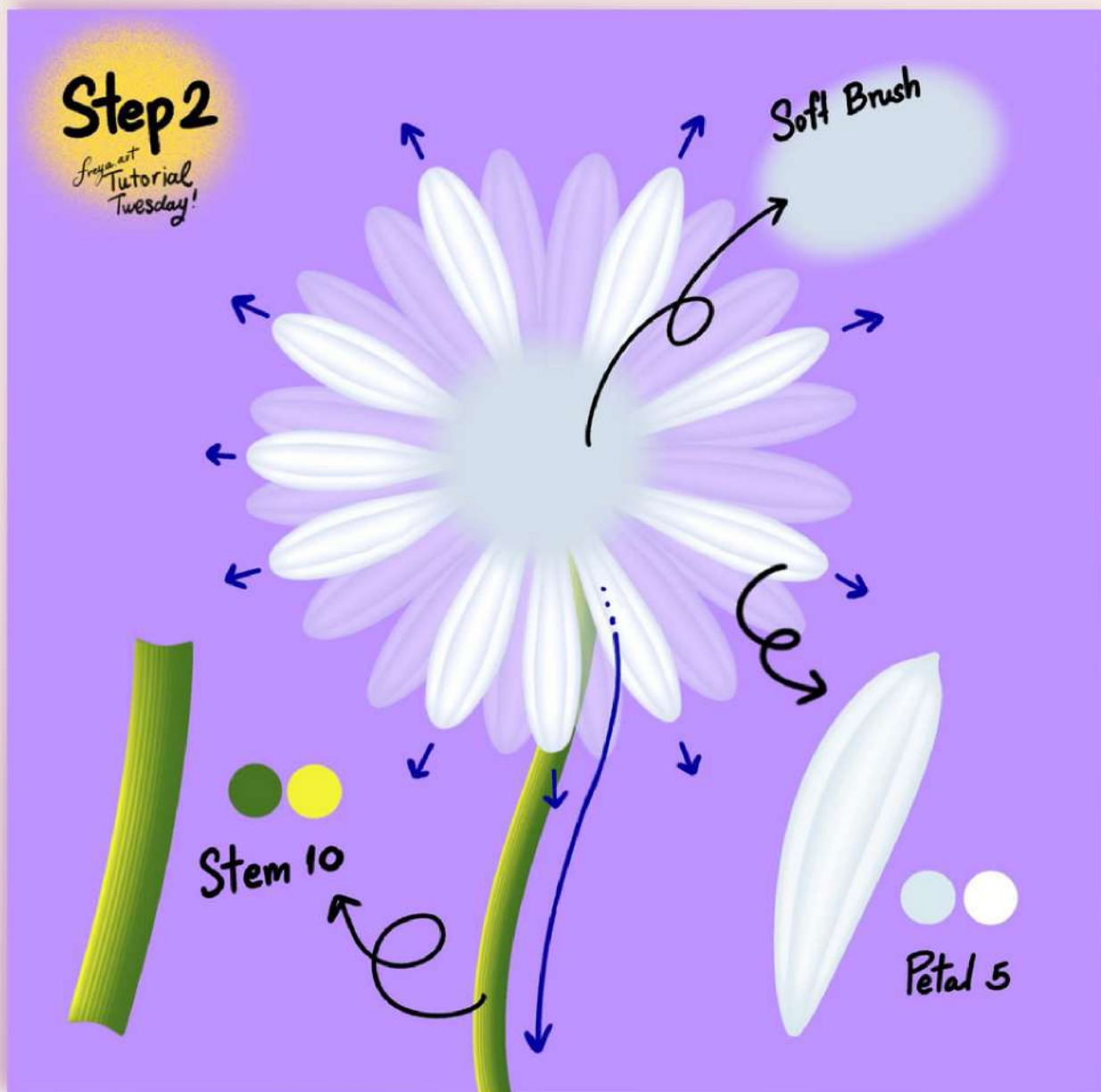


FREYA KOTCHAKORN

Freya.art

DAISY TUTORIAL

Then finally, add a light blue center using the Soft Brush from Procreate's default Airbrushing group.



FREYA KOTCHAKORN

Freya.art

DAISY TUTORIAL

Add another layer. Set the color to orange and using the Soft Brush again, add a bit on top of the blue center.



FREYA KOTCHAKORN

Freya.art

DAISY TUTORIAL

Add another layer for the leaf. Set the color duo and using Leaf No. 10 brush, draw the leaf moving outward. Work with minimal pressure at first, add pressure to expand the leaf width then ease up on the pressure to taper off.



FREYA KOTCHAKORN

Freya.art

DAISY TUTORIAL

Add another layer for the pollen. Turn on symmetry and rotational symmetry again. Go to your layer and enable Drawing Assist. Set the color duo and use Pollen No. 8 first. Tap to create the circles moving in a curved direction, from the center outwards. Each circle should be slightly bigger than the last.



FREYA KOTCHAKORN

Freya.art

DAISY TUTORIAL

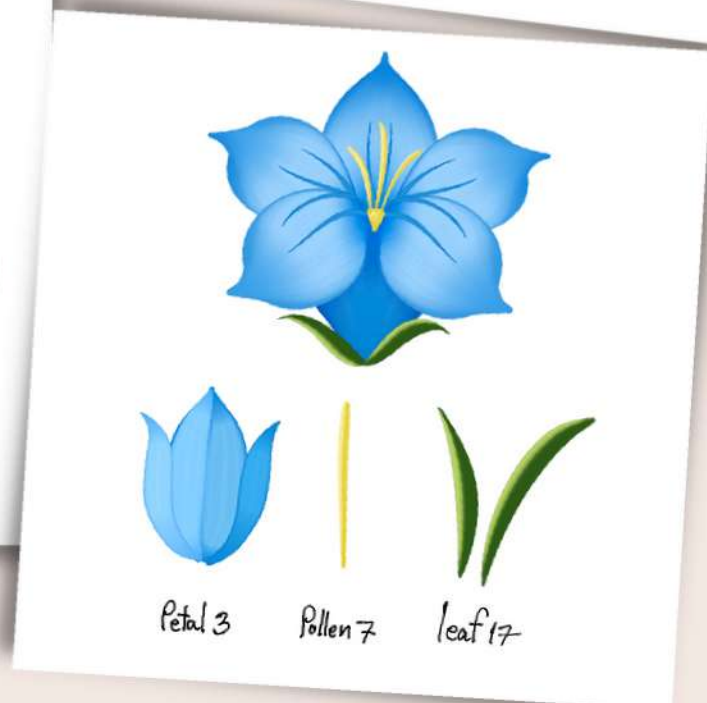
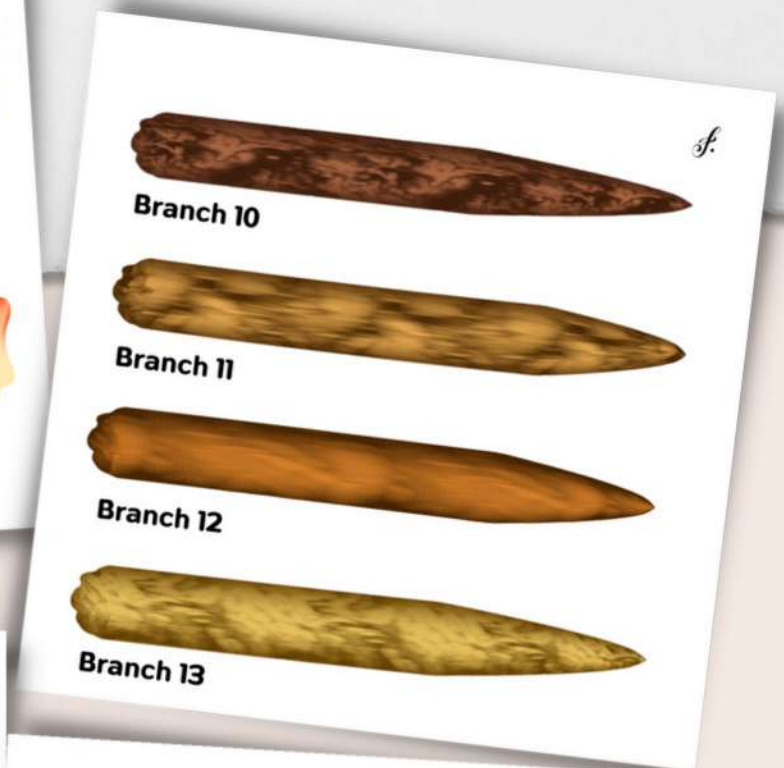
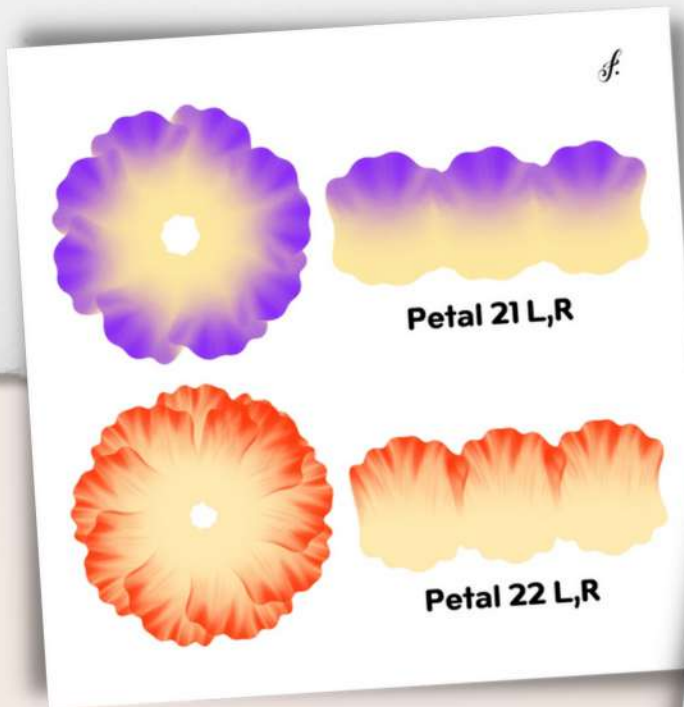
Add another layer, and turn on symmetry and rotational symmetry again. Go to your layer and enable Drawing Assist. Then using Pollen No. 4 draw around the sides covering about halfway of the pollen.



FREYA KOTCHAKORN

I hope you enjoyed this FREE Tutorial!

Please explore the many ways you can effortlessly create botanical illustrations with this set! The combinations are endless!



FREYA'S EFFORTLESS FLOWER BRUSH SET

PROCREATE.COURSES



FREYA KOTCHAKORN